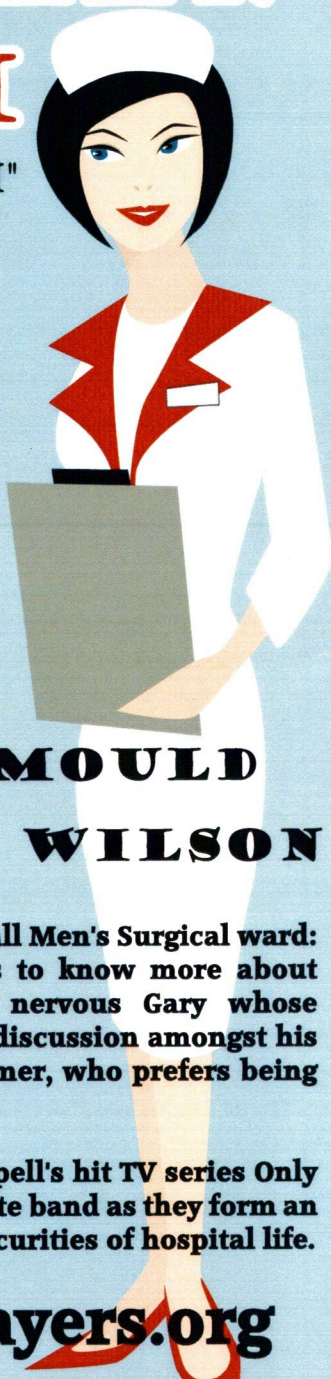


ONLY WHEN I LAUGH

"IT CAN DAMAGE YOUR HEALTH"



THE PLAYERS "AUTUMN" PRODUCTION

AUDITIONS TO TAKE PLACE
EARLY JUNE 2013

DIRECTED BY: **GLYN MOULD**

PRODUCED BY: **MARY WILSON**

A comically mismatched trio of men share a small Men's Surgical ward: the cynical and defensive Higgins, who seems to know more about medicine than the doctors, the young and nervous Gary whose inexperience with women is a subject of much discussion amongst his companions, and the weary hypochondriac Palmer, who prefers being in hospital to living his lonely bachelor life.

It Can Damage Your Health, based on Eric Chappell's hit TV series Only When I Laugh, traces the fortunes of this disparate band as they form an uneasy alliance against the confusions and insecurities of hospital life.

info@kingscliffeplayers.org
www.kingscliffeplayers.org

Brassed Off

King's Cliffe Players in association with
Yarwell & Nassington Brass Band



Performed April 2013



**"Where there's muck there's brass
Where there's brass there's tax"**



hc

Hunt & Coombs

solicitors

For tax & care mitigation
advice

Call: **01733 882800**

Henry Anstey
henry.anstey@hcsolicitors.co.uk

Paddy Appleton
paddy.appleton@hcsolicitors.co.uk

Business, Personal & Spanish Legal Services

Oundle
01832 273 506

Peterborough
01733 882 800

Huntingdon
01480 411 224

10% Discount on Wills when presenting this advert

PC HOWARD LTD

DISTRIBUTION & WAREHOUSING

**Delivery
Solutions**

Nationwide Next Day and Economy Service

100+ trucks: 7.5 to 44 tonne fleet

Single Pallet to Full Loads

Daily Collection

Booking in

Timed Deliveries

Dedicated Customer Service

Full Internet Track and Trace Facilities

300,000 sq ft, professionally managed

itemised picking and packing

Racked and Block Stacking

ISO Accreditation

Pest Control, Fully Alarmed

Computerised Stock System

**Storage
Solutions**

Peterborough Corby Northampton

Tel: 01780 444444 or E-mail: andrew@pchoward.com

Swindon

Tel: 01793 852221 or E-mail: marcus@pchoward.com

Web: www.pchoward.com

PC Howard Ltd is a member of Palletways (UK) Ltd



A play by Paul Allen adapted from the screenplay
by Mark Herman by kind permission of the
Touring Consortium Theatre Company.

Pleased to support **Brassed Off**

Key services

Moore Stephens provides a range of valuable services, tailored to your specific needs. Our service offerings include:

- Audit
- Business support & outsourcing
- Business tax & VAT
- Corporate finance
- Personal Taxation
- Private client services
- Wealth management

Niche sectors

Moore Stephens provides highly specialist advice for particular industry sectors. Our sector experience includes:

- Charities & not-for-profit
- Financial services
- Insurance
- International businesses
- Professional practices
- Real estate



Directed By: Felicity Thistlethwaite

Acknowledgments

A HUGE vote of thanks from the cast and production team must go to author of the play, Paul Allen, whose help and support were invaluable in allowing us to perform 'Brassed Off'.

Designed & Published by:

Newsco Software
T: 01733 207910
E: info@newsco-software.co.uk
W: www.newsco-software.co.uk

Printed by:

Spiegl Press Stamford
T: 01780 762550
E: sales@spiegl.co.uk
W: www.spieglpress.com

During the rehearsal period for 'Brassed Off', a group of us visited the National Coal Mining Museum near Wakefield. It was an eye opening experience and I'd recommend it to anybody. What struck me was that even in the second half of the 20th century when mechanisation really came in, it was still a dirty, hard and dangerous job, but the men seemed to like doing it! There is something about working in close proximity with each other, sharing the noise, grime, smells, and risks which brings people together, creating a camaraderie which extends to life on the surface. In 'Brassed Off' the miners and the rest of the community instinctively know that

if the pits close, it is not just the jobs that will be lost, or a way of life, but something much more deeply rooted; that sense of shared purpose and mutual support which can be summed up as 'brotherhood'.

We dropped into 'Grimley' (better known as Grimethorpe) on the way back from the museum. There are nice new industrial units built on the flattened mine workings, showing attempts to breathe new life back into the town. Perhaps it was just the rain on that grey February Saturday afternoon playing with my imagination, but it looked to me as if it had lost its soul.

Felicity Thistlethwaite

Offices in Corby and Peterborough
www.moorestephens.co.uk



elite exteriors

Domestic & Commercial Cleaning Specialist



"I was really impressed with Jeremy and his team. They made my green fascias sparkling white again, with no trouble at all." Mrs Dare, Bretton, Peterborough

Elite Exteriors are specialists in cleaning all those hard to reach, hard to clean, outdoor surfaces for both **your home** and **your business**.

We specialise in cleaning children's outdoor play areas, safety surfaces and sports areas. We clean surfaces from playgrounds to multi-use games areas to hard surfaces such as concrete, block paving and tarmac. We also clean domestic conservatories, guttering and fascias.

"We can weed kill and powerwash your block paving, then resand and apply a sealant if required. We hand clean the whole of your conservatory (including the fiddly bits at the top!) and leave it looking sparkly and as new. Our gutter cleaning is done with a vacuum which removes all the debris and thanks to poles allows us to reach safely over conservatories and up to three floors if required".



Before



After



Before



After



Before



After



Before



After

RESIBLOCK
Registered installer

Arrange a quote today,
there will be no obligation
and completely free.

01733 340890
07709 491337

Unit 15 Peterborough Workspace House, 28/29 Maxwell Road, Woodston, Peterborough, PE2 7JE
Email: jeremy@eliteexteriors.co.uk Web: www.eliteexteriors.co.uk

Glyn Mould

School of woodcarving

For a leaflet phone **07753 298 501**

Or visit **Art in Action**
18th—21st July

To see my work including the new
"Political Seat"

Just off the M40 at Waterperry, nr Oxford

The Carvers Workshop, Sacrewell Farm Centre, Thornhaugh, Peterborough, PE8 6HJ
www.sacrewell.org.uk/woodcarving

ENROL FOR THE SUMMER SCHOOL NOW!

3 Day course £120

29th—31st July 2013

5 Day course £200

5th—9th August 2013

Download a booking form from my
website

LUDOVIC POTTS RESTORATIONS

*Renovation ~ Inlay ~ Gilding
Clock & Barometer Repairs
Replacement Fittings
French Polishing
Leather Lining ~ Upholstery
Lacquer work ~ Cane & Rush work*

Tel: 01733 849007
www.restorers.co.uk



TREVOR BENTON

Hi, I am Trevor Benton

Freelance Sales & Project Management

"I can be your sales executive on commission only, day rate or a mix of both."

Using my 20 years, working as a capital equipment sales executive, I can build relationships that bring continual business through customer loyalty.

I have extensive experience of identifying the needs of a wide range of prospects and existing customers, and the ability to "close the sale".

I have many high quality contacts to help increase your profits and grow your business. So why not give me a call for a no obligation discussion, it could be to both our benefits.

Tel: 07921 749706

Info@trevorbenton.co.uk
www.trevorbenton.co.uk



JOHN PAIGE SWLA
JANE LEYCESTER PAIGE FSBA

Pictures of wildlife, plants,
Landscapes, buildings and portraits

Come into our gallery at the top of Eagle Lane
or visit our website
and see the quality of our work.

Telephone: 01780 470247
www.oldbrewerystudios.co.uk
e-mail: paiges@oldbrewerystudios.co.uk



**TRANSIT RETAIL
SERVICES LTD**

*Wishing you every success
with 'Brassed Off' and hoping
Shane looks after the
supermarket trolley on loan
from TRS*

TRS is one of the country's leading service
companies specialising in office &
commercial removals, store clearance,
storage and residual recovery. We also
supply commercial chest freezers, chillers,
shop shelving and pallet racking.

TRS Limited, Manor Farm, Wibtoft,
Lutterworth, Leicestershire, LE17 5BB
Tel: 01455 220221 Fax: 01455 220208
E: jg@trs-uk.co.uk
www.trs-uk.co.uk

Martin James The Village Sweep

I am pleased to support the
King's Cliffe Players in
Brassed Off

**Avoid the
Autumn rush
Book NOW for a
Summer Sweep**

"For all your Chimney sweeping needs"

**01780 470275 or 07749 438567
mhj1@btinternet.com**

Past Productions



1986	An Evening of Edwardiana
1987	Dick Whittington
	Punch & Judy
1988	The Golden Mask
1989	Aladdin
1990	Cinderella
1991	The Wizard of Oz
	Fiesta Fandango
1992	Robin Hood
	Punch & Judy
	Loot
1993	Sinbad
	Billy Liar
1994	Little Jack Horner
	Tomb with a View
1995	Puss in Boots
	Absurd Person Singular
1996	Over the Cliffe
	Pull the Other One
1997	Robinson Crusoe
	Dark Lucy
1998	A Month of Sundays
1999	Red Riding Hood
	U.R.G.E
2000	Snow White
	Off the Hook
2001	Arabian Knights
	Out of Sight, Out of Murder
2002	Jack and the Beanstalk
	Panic Stations
2003	Babes in the Wood
	Ladies who Lunch
	Time of our Lives
2004	Panto at the OK Corral
2004	Holiday Snaps
2005	The K factor
	Bedroom Farce
2006	Cinderella
	Visiting Hour
2007	A Christmas Carol
2008	Oh What a Lovely War
2009	Pompeii the Panto
	My Mother Said- - I Never Should
	Ghost Train
2010	My Fair Lady
	Three One Act Plays
2011	Treasure Island
	Arms and the Man
2012	Oliver
	Allo Allo

Coal Not Dole

KEEP PITS OPEN

6

In brief.....

Gloria has been sent to her old hometown of Grimley to determine the profitability of the pit for the management of British Coal. As she plays the flugelhorn brilliantly, she is allowed to play with the local Grimley Colliery Brass Band which has been in existence for a hundred years and is as old as the mine itself. Gloria feels obliged to keep her purpose concealed from the band members. She renews a childhood romance with Andy; a young miner not averse to placing a bet, which soon leads to complications. Gloria's frustrations grow as she finds herself fighting to have the contents of her report accepted rather than merely being part of a P.R. exercise by the management team.

Danny is the passionate band conductor who faces his own

fight to keep the band members committed during such difficult times. His health has been adversely affected by his mining days and he is increasingly seen coughing up coal dust from deep within his lungs. However, the band does share his ultimate dream of winning the forthcoming Saddleworth Competition which would allow them to go on and compete at the Royal Albert Hall.

His son Phil is badly in debt and supplements his mining shifts with performing as a clown at children's parties. His personal struggle is to provide for his wife and three young children: Shane, Melody and Craig. Keeping a roof over their heads is increasingly difficult with the bailiffs only ever a knock away.

Tensions run high when money is offered by the management team to accept the closure of the pit but miners Jim and Harry have very vocal wives, Vera and Rita, who loyally protest for the pit to remain open. Each family must decide what is best for them, knowing that the result may cause both friendships and the wider community to be torn apart.

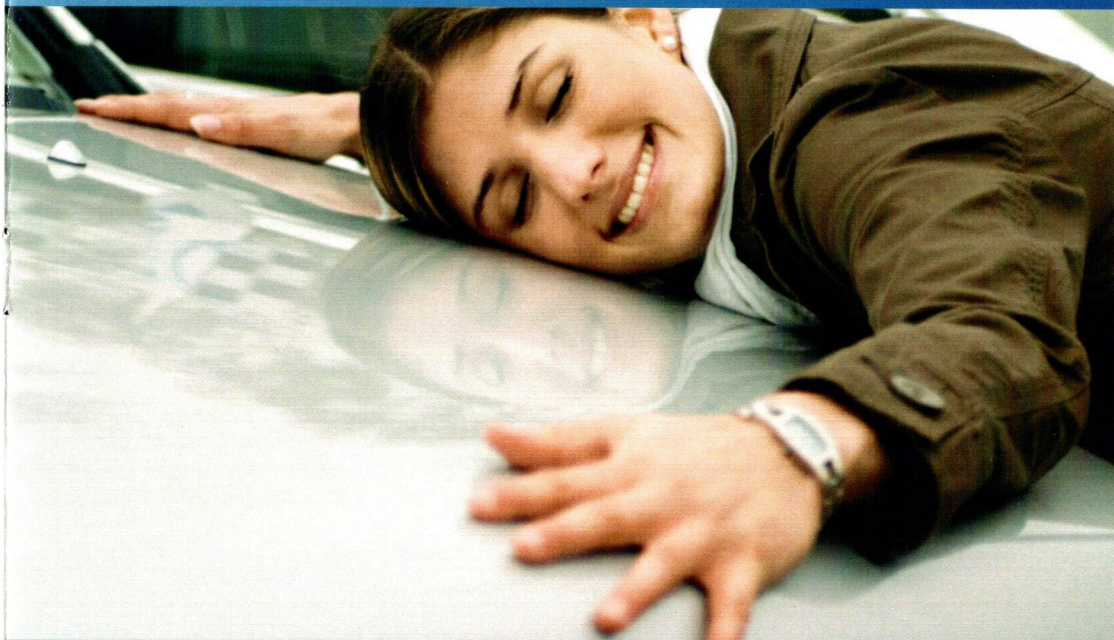
The band pull together when Danny's health falters and they assemble under his hospital window to play Danny Boy, much to the annoyance of the nursing staff. Motivated by a note passed to him by his son, it seems that nothing can stop him from supporting his band in the way he knows best.

Paul Allen, the author of the play, uses strong language typical of the time and location and our director has kept the performance true to the script.

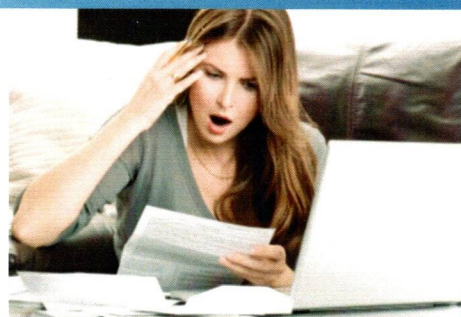
Please note that the production also uses strobe-effect lighting.



Apply online at www.warrantyfirst.co.uk



The specialist car warranty company operating throughout the UK



Warranty First
Ultimate Car Protection



Why do I need car warranty?

The cost of motoring has reached an all-time high.

The last thing you need is to face expensive garage bills if you ever experience a sudden mechanical or electrical failure.

Our comprehensive car warranty plans protect you from day one regardless of the make and model of your car up to 15 years old and 150,000 miles.

Warranty First Limited

t: 0844 324 7257 customer care
t: 0844 324 7258 claims
f: 0844 324 7259 fax

e: info@warrantyfirst.co.uk
w: www.warrantyfirst.co.uk

The Brassed Off Cast

and

Production Team

Band Members

Principal (Flugel solo) **Harriet Warren**
 Solo Cornet **Alex Heaton**
 Solo Cornet **Ian Barraclough**
 Soprano **Andrew Salisbury**
 3rd Cornet **Noreen Holt**
 Flugel (Flugel solo) **Keely Watson**
 Solo Horn **Malcolm Hodgett**
 1st Horn **Jennie Wood**
 2nd Horn **Yvonne Monaghan**
 Euph **Keith Thrift**
 Euph **Basil Leigh**
 Euph **Sarah Meredith**
 1st Baritone **Eddie Newton**
 1st Baritone **Marina Arnold**
 1st Trombone **Simon Mould**
 Trombone **Richard Atkins**
 Bass Trombone **Quentin Arnold**
 Eb Bass **Dave Arnold**
 Bb Bass **Angus Welch**
 Bb Bass **Edward James**

Character

Danny
 Phil (Dany's son)
 Sandra (Phil's wife)
 Jim
 Vera (Jim's wife)
 Harry
 Rita (Harry's wife)
 Andy
 Gloria
 Shane
 Craig
 Melody
 Baliffs / Announcers
 Nurses / Women
 Dogs

Actor

Mike Herring
John Padwick
Angela Lumsdon
Hugh Butterworth
Heather Butterworth
Graham Scotney
Philippa Lang-Norris
Jonathan Farrow
Kate Jones
John Marshall
Joseph Feeney
Megan Scotney
David Rushton & Mike Henchy
Gina Scotney & Andrea Fern
Smudge & Yogi

Production Team

Director **Felicity Thistlethwaite**
 Producers **Glyn Mould & Mell Peel**
 Costumes **Carol Rash & Members of the cast**
 Props **Pat Howells, Rob Bibby & Transit Retail Services Ltd**
 Set design **Jenny Dixon**
 Set construction **Mike Herring**
 Front of house **Brenda Wright, Jane Herring & team**
 Sound **Eric Cullum & Adrian Hall**
 Lighting **Anne Mather, John Marshall, Jo Thistlethwaite**
 Bar **David and Tina Carey and Team**
 Back stage crew **Jenny Dixon, Mell Peel, Niall Graham, Pat Howells & Debbie Balmer**
 Rehearsal Prompt **Verina Henchy**
 Programme /Publicity **Dorothy King & Robert King**
 Dog Handler **Abigail Scotney**
 Set Painting **Jenny Dixon, Hiliary Coulthard, Mell Peel & David Rushton**
 Child Minding **Ellie & Mike Feeney**



"The only reason
 I get up in the morning is to
 see if my luck's changed
 and it never bloody has"

Andy

Produced by: Glyn Mould and Mell Peel

The Yarwell and Nassington Britannia Brass Band has existed under various names since the early nineteenth century, and is one of the oldest bands in the country.

Today, YNBB comprises a large group of like-minded brass players of all ages, who meet weekly to make great music and have fun doing it!

We perform in a range of settings, from churches to village fetes, and are proud to represent the two villages in our name in the local area

This is also the home of Yarwell & Nassington Junior Band! This new group for anyone who is currently learning to play a brass instrument. Led by the senior band's Musical Director, Richard Atkins, you will improve technique, sight-reading and ensemble skills, all in a fun and enthusiastic atmosphere.

The junior band meets most Wednesday nights from 6:40pm - 7:15pm in Yarwell village hall. Please feel free to just turn up.

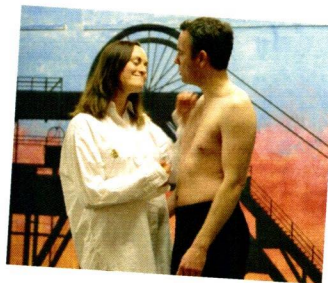
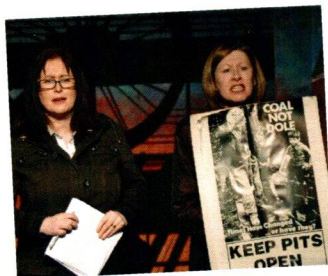
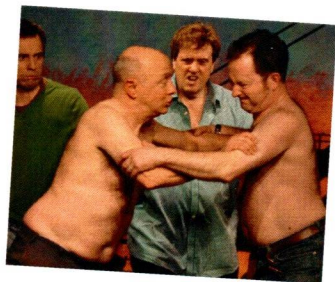


COAL NOT DOLE

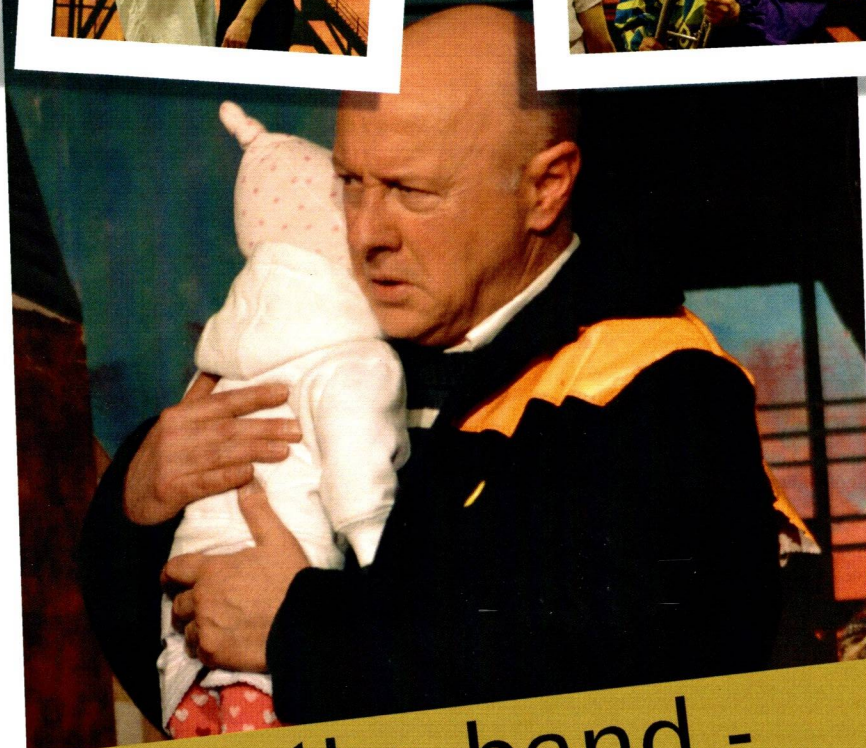
8



KEEP PITS OPEN



9



"I love the band -

we all do - but there's other things in life,
you know, that's more important"

Phil

"Not in mine there isn't"

Danny